

# WS

## Type-C Interface Series with RAID

用户指南

User's Manual



发行时间：2017年9月  
版本号：1.0



官方网站



Website

深圳市元创时代科技有限公司 (ORICO Technologies Co.,Ltd.)

联系热线 / Tel: 86-755-25196059

客服热线 / Hotline: 400-6696298

官方网站: [www.orico.com.cn](http://www.orico.com.cn)

Website: [www.orico.cc](http://www.orico.cc)

公司地址: 深圳市龙岗区布吉街道甘李工业园甘李六路12号中海信创新产业城14A栋903-904  
Manufacturer Add: 903-904, 14A, Zhonghaixin Innovation Industrial Park, 6th Gan Lee Road, Buji, Longgang District, Shenzhen, China

工厂地址: 东莞市常平镇塘角路24号元创动力 (ORICO) 互联网产业园

Factory Add: ORICO Internet Oriented Industrial Park, No.24 Tangjiao Rd, Changping County, Dongguan

执行标准: GB 4943.1-2011

合格证 已检验

## 目录

中文说明书 .....	1-13 页
一、产品简介 .....	2
1.1 系列硬盘柜产品简介 .....	2
1.2 测试产品注意 .....	2
1.3 产品特点 .....	2
1.4 包装清单 .....	3
1.5 关于此说明书 .....	3
二、产品使用说明 .....	3
2.1 外观 .....	3
2.2 产品参数 .....	5
2.3 操作说明 .....	5
2.3.1 硬盘安装 .....	5
2.3.2 连接电脑 .....	6
2.3.3 卸载硬盘 .....	6
三、RAID模式的介绍与组建方法 .....	7
3.1 RAID 模式的介绍 .....	7
3.2 RAID 模式详解 .....	9
四、硬盘格式化分区操作 .....	10
4.1 硬盘格式化与分区 .....	10
五、其它 .....	14
5.1 产品故障排除 .....	14
5.2 保修 .....	14
5.3 版权声明 .....	15
5.4 关于我们 .....	15
English Manual .....	P16-31

## 一、产品简介

### 1.1 ORICO WS 系列硬盘柜产品简介

该系列硬盘柜属于ORICO定位高端的存储系列产品，采用铝镁合金材质打造的机身，表面喷砂阳极氧化工艺处理，优秀的外观设计，整个产品质感十足；Type-C接口采用Type-C To SATA3.0 6Gbps主控方案，UASP加速协议，ORICO硬盘存储柜以全新的设计将为你带来不同的产品使用体验。

### 1.2 测试产品注意

为避免您的硬盘资料丢失，阅读此说明书时，请使用没有储存文件的硬盘进行试用，这样可以安全熟悉产品的使用。

### 1.3 产品特点

#### 1.3.1 功能特色

- 支持 SATA I II III，最高支持6Gbps；
- 支持多种企业级RAID模式，支持提升硬盘的性能和安全性；
- 部分机型内置散热风扇，高转速，大风量，静音散热；
- 支持UASP加速协议，可有效提高效率20%；
- 外置大功率强劲电源供电，保障硬盘稳定运转；
- 支持热插拔，即插即用；

#### 1.3.2 结构设计和外观特色

- 后面板大面积散热孔设计，配合机身金属散热，全方位高效散热；
- 机身四周采用一体成型铝挤加圆弧倒角，简约稳重；
- 表面喷砂氧化处理工艺；



1.4 包装清单

产品主体.....	1PCS
电源适配器.....	1PCS
电源线.....	1PCS
螺丝刀.....	1PCS
数据线.....	1PCS
说明书.....	1PCS
感谢卡.....	1PCS

由于产品更新改进的需要，产品以及包装或配件的外观有变动的可能，请以您收到的实物为准，感谢您的支持！如有缺失，请您联系购买的经销商。

1.5 关于此说明书

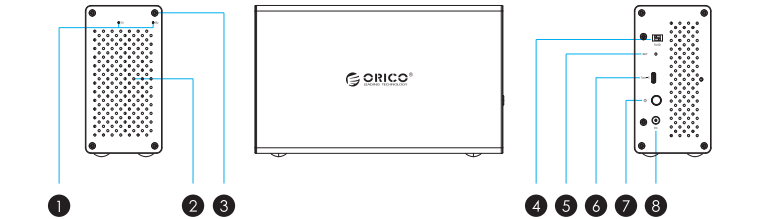
该说明书为WS系列不同盘位带Type-C接口及Raid功能的产品系列，该系列具体型号如下表格：

型号	产品尺寸
WS200RC3	223mm(L) x 69mm(W) x 136mm(H)
WS400RC3	242mm(L) x 135mm(W) x 139mm(H)
WS500RC3	242mm(L) x 165mm(W) x 139mm(H)

二、产品使用说明

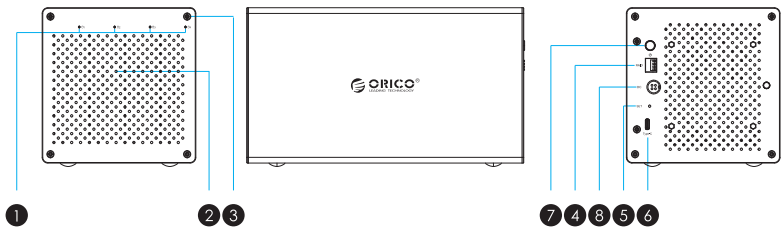
2.1 外观

WS200RC3



- 1 LED指示灯
- 2 散热孔
- 3 螺丝孔
- 4 RAID设置开关
- 5 SET按键
- 6 输出接口
- 7 电源开关
- 8 DC电源接口

WS400RC3



- 1 LED指示灯
- 2 散热孔
- 3 螺丝孔
- 4 RAID设置开关
- 5 SET按键
- 6 输出接口
- 7 电源开关
- 8 DC电源接口

WS500RC3



- 1 LED指示灯
- 2 散热孔
- 3 螺丝孔
- 4 RAID设置开关
- 5 SET按键
- 6 输出接口
- 7 电源开关
- 8 DC电源接口

2.2 产品参数

项目	参数详细
系列	带Type-C接口及Raid功能
产品颜色	银色
输入接口	SATA3.0
输出接口	USB3.1 Type-C
安装方式	螺丝安装
指示灯状态	有
材质与结构	铝合金材质
支持系统	Windows / Mac / Linux

2.3 操作说明

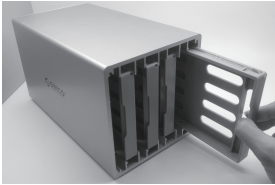
2.3.1 硬盘安装

第一步：使用螺丝刀将四颗螺丝拧下，然后抽出硬盘支架；（图1，图2所示）

图1

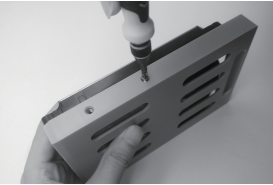


图2



第二步：将硬盘放到硬盘支架上，然后在硬盘架锁上4颗螺丝固定硬盘；（图3所示）

图3



最后步骤：将支架插入硬盘柜内，再将后盖锁上螺丝固定住。（图4，图5所示）

图4

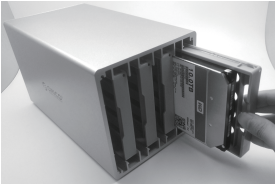


图5



2.3.2 连接电脑

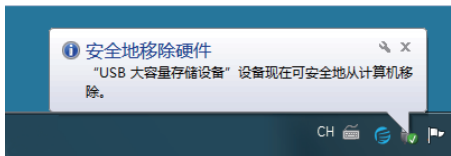
放入硬盘后，用原装的电源适配器插入电源口，使用数据线连接产品的数据口，另外一端连接到电脑的 USB 接口，连接好之后再按一下开关键。

2.3.3 卸载硬盘

注意：当需要卸载硬盘时，请先停止对硬盘内数据文件的读取与使用，否则将无法退出，强行退出可能会导致您的数据异常或丢失。

(1) 从 windows 系统卸载：

首先停止硬盘读写操作，然后单击任务栏 USB 小图标，选择要卸载的磁盘驱动器，完成卸载。



(2) 从 MAC 系统卸载：

首先停止硬盘读写操作，把磁盘驱动器拖动到回收站，即可完成卸载。

### 三、RAID模式的介绍与组建方法

#### 注意事项

- (1) 请按照正确的方向插入硬盘，以免损坏硬盘。
- (2) 在工作状态请禁止卸下硬盘。
- (3) 硬盘是精密设备，在使用前请阅读使用说明书。
- (4) 请先备份好您硬盘中的资料，组建 RAID 时，会删除硬盘原有的数据。
- (5) 在 RAID 重组状态中，请不要断电或移除硬盘。
- (6) 重新组建 RAID 阵列模式时，请留意重新组建 RAID 模式后原硬盘数据资料会全部丢失。
- (7) 对于产品故障问题，本公司仅提供维修服务，但不承担因人为操作错误或者其他软件的损害，资料丢失等责任。

#### 3.1 RAID 模式的介绍

硬盘柜通电后，首先得组建 RAID 磁盘阵列模式，在不同场景使用不同的整列模式，RAID 模式的介绍如下。

##### 3.1.1 RAID 模式详解

RAID 模式	介绍
RAID0	将硬盘盒内的所有硬盘容量合并，并提升性能（读写速度）。
RAID1	硬盘盒内的两个硬盘互为备份，不提升性能（读写速度），但是安全性优异，支持自我修复（RAID 0 和 JBOD 不支持此功能），可以在其中一个硬盘发生错误或故障时，确保资料仍可被修复、不会造成资料丢失。
RAID3 RAID5	两个模式不但可以确保资料安全性，同时带来一定的性能提升，最经济的 RAID 组建方案，适合大多数用户的需求。
RAID 10	兼顾了 RAID 0 和 RAID 1 的优点，既有安全性，也考虑兼顾硬盘高速传输。适合存储对安全性较高的数据。
Normal/ Clear-RAID/ PM	常规正常状态，硬盘盒内的所有硬盘未组成任何 RAID 模式，独立运行。
Clone	克隆模式至少需要两个硬盘组成，在克隆模式下，数据会同时写入两个或多个硬盘以实现克隆备份。存储容量只有最小硬盘容量的大小。
JBOD / SPAN / Combine	JBOD / SPAN / Combine 模式只是简单地将多个硬盘串联在一起，总容量等于所有硬盘容量的总和

##### 3.1.2 RAID 模式操作注意事项

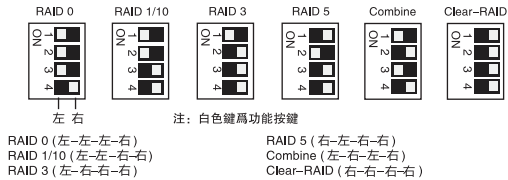
- (1) RAID 模式需要两个或更多硬盘。
- (2) 设置或更改 RAID 模式时会将本产品内所有硬盘的文件全部清空，因此，设置或更改 RAID 模式前，请先备份所有资料。
- (3) RAID 模式运行时，请勿弹出硬盘盒内的硬盘。如需弹出硬盘，请先从计算机中安全删除硬件并弹出媒体，然后关闭硬盘盒的电源，再弹出硬盘。
- (4) 硬盘为精密设备，请时刻备份好您的重要资料，并谨慎操作使用，以免任何错误或不当的操作造成数据出错或丢失。
- (5) 设置或更改 RAID 时，请确保硬盘盒和硬盘都处于 Normal 模式下，或者先设置硬盘盒到 Normal 模式之后方可设置或更改到您需要的 RAID 模式。
- (6) Normal 模式下的所有硬盘未组成任何 RAID 模式，硬盘盒内的所有硬盘均为独立的磁盘工作以及显示在计算机中。需要注意的是：此模式下如果弹出其中任何一个硬盘或是插入一个硬盘，将会使硬盘盒重启、其他所有硬盘也会暂时中断连接，然后重新连接上去，建议在硬盘盒断电时弹出或增加硬盘。

(7) 请勿更改 RAID 状态下的硬盘位顺序, 以免影响 RAID 模式的稳定运行。

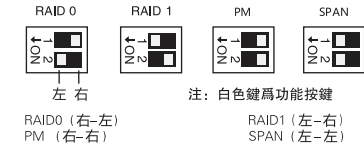
3.2 设置RAID模式

3.2.1 组建RAID模式

(1) 首先, 拨动 RAID 模式开关设置想要的 RAID 模式



以上RAID模式适用于: WS400RC3、WS500RC3



以上RAID模式适用于: WS200RC3

(2) 按住“SET” 按键不放, 然后开机启动硬盘盒, 大约 6 秒钟后松开 SET 按键, 即组建 RAID 模式成功。

注意: 组建 RAID 成功后, 会生成一个新的硬盘, 必须要先进行初始化、格式化分区之后, 才可以正常使用。

3.2.2 RAID模式重组

当使用中的产品中有一个硬盘坏掉, 硬盘指示灯将会闪烁红灯, 同时还会发出滴滴滴的叫声, 这个时候按照指示灯的指示情况, 将损坏的硬盘替换掉即可进行自动重组的功能。

(型号为 WS200RC3 无声音提示)

硬盘重组注意事项:

- (1) 更换硬盘需要有容量的限制, 新硬盘的容量要大于或等于损坏硬盘的容量
- (2) 更换硬盘时检测硬盘的损坏可根据硬盘指示灯进行判断
- (3) 红灯闪烁为重组中 / 蓝灯指示为重组完成

(4) 在重组硬盘中, 不要更改 RAID 模式, 否则重组操作将无法完成

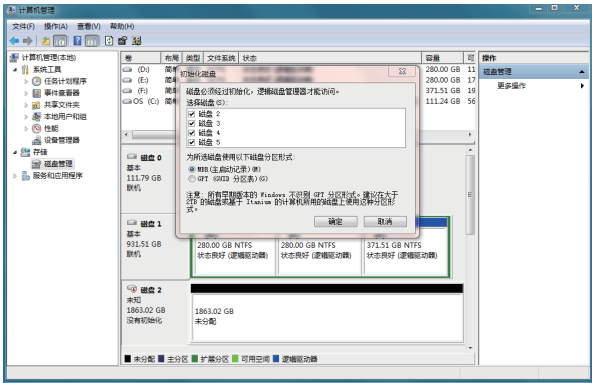
(5) 在重组中不要更换硬盘, 否则重组操作将无法完成

四、 硬盘格式化分区操作

4.1 硬盘格式化分区操作

使用全新的硬盘需要先初始化、格式化分区, 否则无法正常工作。如果是全新的硬盘, 请按照以下方法对硬盘进行初始化、格式化分区操作。

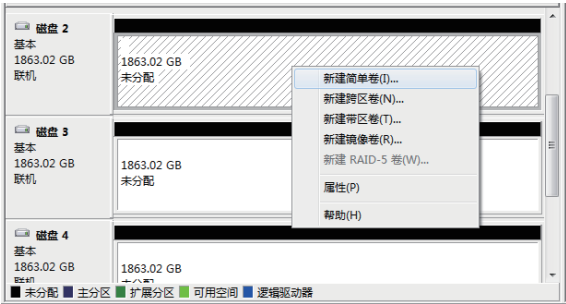
- (1) 请确保 ORICO 硬盘柜已经正确安装, 连接到了电脑;
- (2) 鼠标右击“计算机”, 然后选择“管理”, 在打开的新窗口找到“磁盘管理”, 自动弹出了初始化新硬盘的窗口, 选择“MBR”或“GPT”分区形式, 点击“确认”。



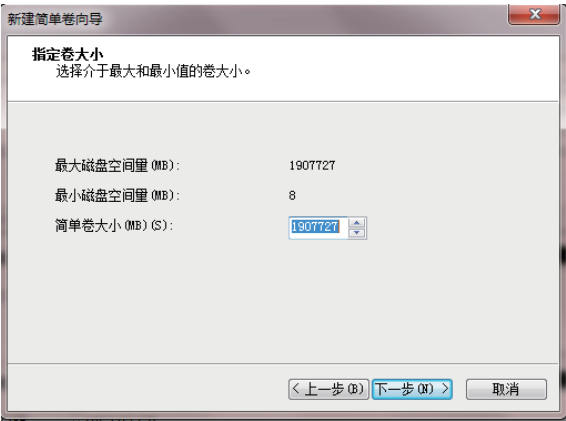
注意:

- 如果硬盘容量小于 2TB, 请使用 MBR 硬盘分区形式初始化硬盘;
- 如果硬盘容量大于 2TB, 则必须要使用 GPT 硬盘 分区形式初始化硬盘, 否则将只有 2TB 容量可用, 多余的容量无法使用。

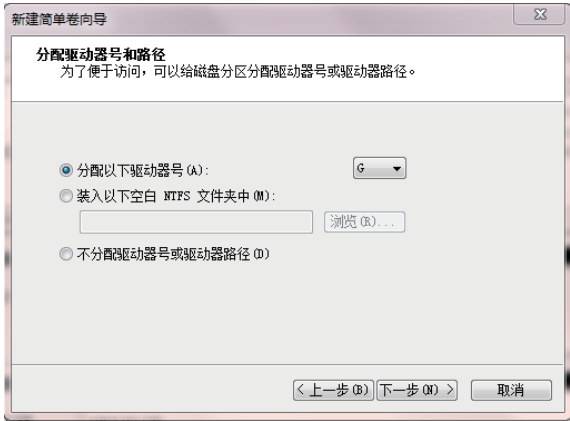
(3) 鼠标右击“未分配”的硬盘空间，选择“新建简单卷”，开始给硬盘分区格式化；



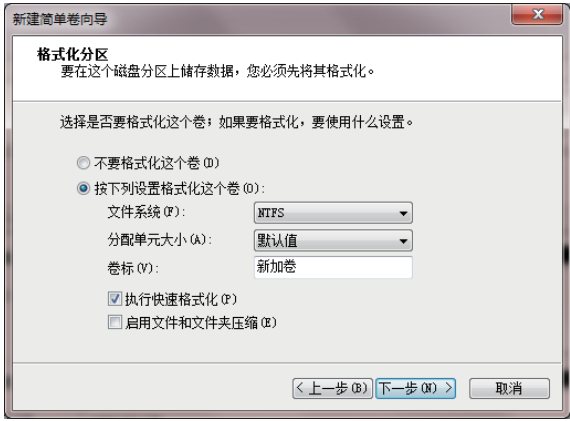
(4) 设置硬盘分区的容量大小，可自定义分区容量，或者默认设置最大简单卷大小，将会只有一个硬盘分区。



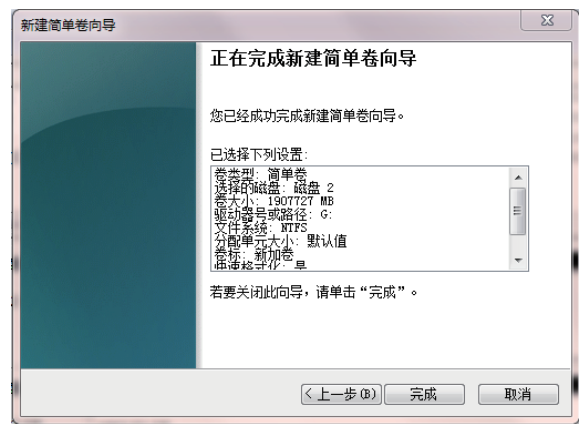
(5) 分配硬盘盘符和路径，(如：资源管理器 C, D, E, F, G 盘) 盘符。



(6) 格式化分区，可以设置文件系统格式 (NTFS、FAT32 或 exFAT)，分配单元大小 (默认即可)，卷标名称，推荐“执行快速格式化”，配置完成，点击“下一步”。



(7) 点击“完成”执行最后的格式化分区操作。



(8) 格式化将需要 5-30 秒钟，格式化完成后将会在资源管理器显示新的分区盘符。



## 五、其它

### 5.1 产品故障排除

- (1) 产品如有出现在计算机内不能设别的情况可以根据以下 2 点进行相应的处理方式；
- 在 XP 系统下，由于 XP 本身系统限制，超过 2TB 容量硬盘不能正常使用，可更新系统到 WIN7 下使用即可。
  - 如已经在 WIN7 系统下使用不能显示硬盘，可以先看看硬盘是不是全新硬盘，新硬盘需要在计算机管理内进行硬盘初始化后方可使用。
- (2) 产品在组建阵列后，如有不能正常显示硬盘容量，可以先在计算机管理内查看硬盘是否在组建新的阵列后需要重新初始化硬盘。

如果问题仍然存在，请联系奥睿科客户服务中心让我们知道你的详细信息和计算机屏幕的“磁盘管理”和“磁盘驱动器”下的“设备管理器”。奥睿科客户服务中心将在这里帮助您完成您的家庭办公存储中心。

奥睿科客户服务中心网站：<http://www.orico.com.cn>

奥睿科客户服务团队：[supports@orico.com.cn](mailto:supports@orico.com.cn)

电话：86-755-25196059

### 5.2 保修

#### 5.2.1 保修条款

本产品依照《中华人民共和国消费者权益保护法》和《中华人民共和国产品质量法》提供售后三包服务。

- (1) 自签收之日起 7 日内，产品出现性能故障并由 ORICO 客户服务中心鉴定之后，可享受退货、换货或免费维修服务。
- (2) 自签收之日起 15 日内，产品出现性能故障并由 ORICO 客户服务中心鉴定之后，可享受换货或免费维修服务。
- (3) 自签收之日起 12 个月内，产品出现性能故障并由 ORICO 客户服务中心鉴定之后，可享受免费维修服务。

### 5.2.2 保修限制条款

深圳市元创时代科技有限公司保修条款不适用于以下情况：

1. 超过保修条款期限。
2. 未经授权拆解、改动或维修过的产品，以及碰撞、进液、摔坏等人为损坏。
3. 水灾、火灾、雷击、地震等不可抗力造成的损坏。
4. 与本使用说明不一致的错误操作。
5. 产品或包装盒条码与实物不符，以及被涂改、撕毁。
6. 未经授权使用非原装配件造成的损坏。
7. 无有效的购买凭证。

### 5.3 版权声明

深圳市元创时代科技有限公司，版权所有

感谢您购买 ORICO 产品，为了更好的使用本产品的所有功能，请您在使用产品之前仔细阅读本使用说明介绍的产品功能、使用说明以及注意事项。

ORICO® 为深圳市元创时代科技有限公司注册商标。

本使用说明中提及的其他所有产品名称、商标、服务名称和公司名称，由其各自的所有者拥有。

本使用说明所提及的信息仅供参考，深圳市元创时代科技有限公司保留随时修改本使用说明中任何信息的权利，无需提前通知。除非有特殊约定，本使用说明仅作为使用指导，本使用说明中的所有陈述、信息等均不构成任何形式的担保。

深圳市元创时代科技有限公司不对因使用本使用说明相关内容及本使用说明描述的产品而产生的任何特殊的、附带的、间接的、继发性的损害进行赔偿，也不对任何利润、数据、商誉或预期节约的损失进行赔偿。在相关法律允许的范围内，在任何情况下，深圳市元创时代科技有限公司对您因为使用本使用说明描述的产品而遭受的损失的最大责任（除在涉及人身伤害的情况下根据适用的法律规定的损害赔偿外）以您购买本产品所支付的价款为限。

### 5.4 关于我们

深圳市元创时代科技有限公司成立于 2009 年，是一家集研发、生产、销售和技术服务为一体的全球顶级数码配件品牌商，基于 "Easy Your PC" 原创设计理念，自创品牌 ORICO（奥睿科），让创新配件再造智能设备新生命、新体验，唤醒消费者的潜在需求。

## Catalog

I Product overview .....	17
1.1 Disk station overview .....	17
1.2 Notice .....	17
1.3 Features .....	17
1.4 What's in the box .....	18
1.5 About the manual .....	18
II Usage manual .....	18
2.1 Appearance .....	18
2.2 Product parameter .....	20
2.3 Instructions .....	20
2.3.1 Installation.....	20
2.3.2 Connect with computer .....	21
2.3.3 Uninstall the hard drive .....	21
III Set Up RAID via ORICO HW RAID Manager .....	22
3.1 About RAID mode.....	22
3.2 How to set up RAID .....	23
3.3 RAID Reassembly Considerations .....	24
IV The format and partition of hard drive .....	25
4.1 Format and partition the hard drive .....	25
V Others .....	29
5.1 Product trouble shooting.....	29
5.2 Warranty.....	30
5.3 Declaration.....	30
5.3 About us .....	31

# I Product overview

## 1.1 The manual of ORICO WS disk station

The series of disk stations are ORICO high-end storage products, with aluminum-magnesium alloy body and anodizing surface, a kind of great products with excellent design; Type-C interface with Type-C To SATA3.0 6Gbps program, with UASP Acceleration Protocol; ORICO disk station will bring you a different product experience with a new design.

## 1.2 Notice

To avoid loss of data of your hard drive, reading this manual, trying to use a hard drive that does not have a saved file, so that you can safely familiarize yourself with the use of this product.

## 1.3 Features

### 1.3.1 Product Functions

- (1) Support SATA1, SATA2, SATA3, speed up to 6Gbps;
- (2) Support for multiple RAID mode;
- (3) Some models have built-in silent cooling fan, strong cooling function;
- (4) Support UASP Acceleration Protocol, can effectively improve the rate of 20%;
- (5) External high-power power supply to protect the hard drive's stable operation;
- (6) Support hot-swappable, plug and play.

### 1.3.2 Structural design, appearance characteristics

- (1) Many cooling holes in rear panel to meet the metal body heat dissipation;
- (2) Aluminum ridge plus arc chamfer design of the periphery of the product, simple and stable;
- (3) Surface blasting anodizing process.

## 1.4 What's in the box

Product Components.....	1PCS
Power Adapter.....	1PCS
Power Cable .....	1PCS
Screwdriver.....	1PCS
Data Cable .....	1PCS
Manual.....	1PCS
Thanks Card .....	1PCS

Due to the need to update the product, the appearance of the product and the packaging or accessories may change, please take the real object you received, thank for your support! If you have any questions, please contact your dealer.

## 1.5 About the manual

This manual is compatible for the WS products with Type-C interface and Raid function .

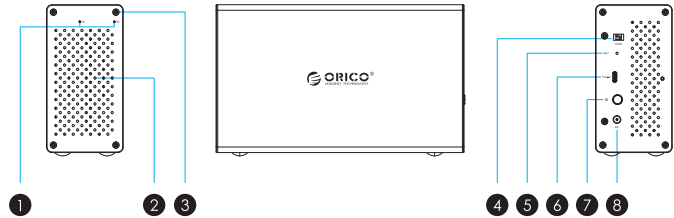
The correspond products are as follow.

Model	Size
WS200RC3	223mm(L) x 69mm(W) x 136mm(H)
WS400RC3	242mm(L) x 135mm(W) x 139mm(H)
WS500RC3	242mm(L) x 165mm(W) x 139mm(H)

# II Usage manual

## 2.1 Appearance

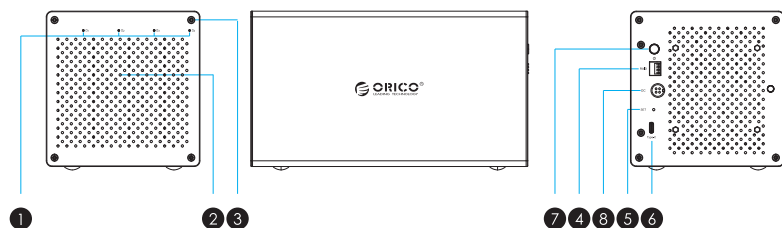
### WS200RC3





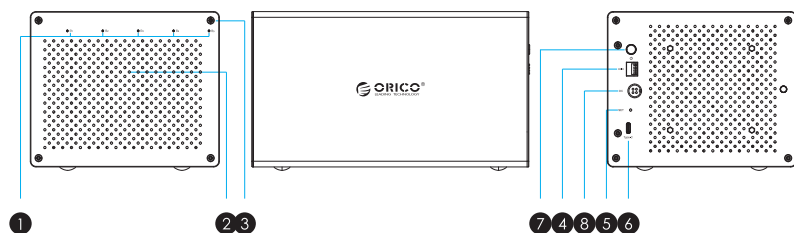
- ① LED Indicator      ② Vents      ③ Screw Holes      ④ RAID setting switch
- ⑤ SET the button      ⑥ Output Interface      ⑦ Power Switch      ⑧ DC Power Interface

### WS400RC3



- ① LED Indicator      ② Vents      ③ Screw Holes      ④ RAID setting switch
- ⑤ SET the button      ⑥ Output Interface      ⑦ Power Switch      ⑧ DC Power Interface

### WS500RC3



- ① LED Indicator      ② Vents      ③ Screw Holes      ④ RAID setting switch
- ⑤ SET the button      ⑥ Output Interface      ⑦ Power Switch      ⑧ DC Power Interface

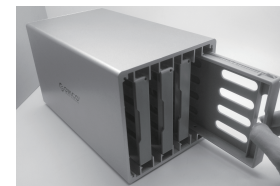
## 2.2 Product parameter

Catalog	Parameter
Series	Product with Type-C interface and Raid function
Product Color	Silver
Input Interface	SATA3.0
Output Interface	USB3.1 Type-C
Installation	Screw mounting
Indicator	Yes
Texture	Aluminum-magnesium alloy
System Supported	windows / Mac / Linux

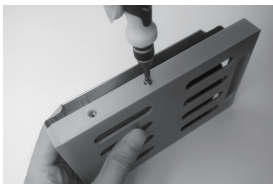
## 2.3 Instructions

### 2.3.1 Hard drive Installation

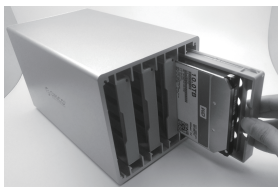
Step 1: Use a screwdriver to remove the four screws, then pull out the hard drive bracket.



Step 2: Put the drive on the bracket, and screw up with four screws.



Step 3: Insert the bracket into the hard drive enclosure, then screw up the rear cover with screws.



### 2.3.2 Connect with computer

After inserting the hard drive, insert the original power adapter into the power port, use the data cable to connect the product data port, and the other end is connected to the computer's USB port.

### 2.3.3 Remove Devices

(1) Remove it from the Windows system

First, stop the read and write operations of the hard drive, and then click the USB small icon on the taskbar, select the disk drive that is needed to be uninstalled to complete uninstall.



### (2) Remove it from MAC

First, stop the read and write operations of the hard drive, and then drag the disk drive to the Recycle Bin to complete the uninstall.

## III Set Up RAID via ORICO HW RAID Manager

### 3.1 About RAID mode

**RAID10** : Security and the promotion of transmission performance are combined into RAID1 and RAID0, but the use ratio of hard drive is only 50% and higher demand on data safety is recommended.

**CLONE** : CLONE consists of at least two drives storing duplicate copies of the same data. In this mode, the data is simultaneously written to two or more disks. Thus, the storage capacity of the disk array is limited to the size of the smallest disk.

**RAID0** : It has the fastest data read speed but had no protection that all data will be lost due to one damaged hard drive, which is applicable to temporary storage and high-speed transmission for data, such as video editing and other scenes.

**RAID1** : Data storage is the most safe and not to be worried to lose data even if one hard drive is damaged. However, the use ratio for hard drive is just 50% ,thus it is suitable for demanding high-security scenes to store data

**RAID3/RAID5**: With the both consideration of safety and maximum utilization of capacity for the data storage, only one hard drive is consumed in capacity and it is used most as RAID mode

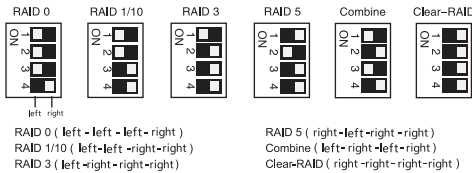
**JBOD/SPAN/Combine:** JBOD ( Just a Bunch of Disks ) excellently bind multiple hard drives with different capacity hard drive but all data will be lost due to one damaged hard drive , thus it is not recommended.

**Normal/Clear-RAID/PM:** Each hard drive is ejected separately and the data stored hard drive can be more convenient to directly use.

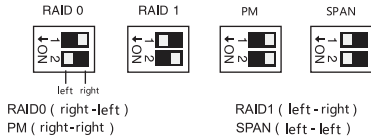
3.2 How to set up RAID

3.2.1 Set up RAID mode

a. First of all , toggle the RAID mode switch to the desired mode.



The above RAID mode applies to :WS400RC3、WS500RC3



The above RAID mode applies to :WS200RC3

- b. Press and hold the SET button, then start the HDD Enclosure , about 6 seconds later, release the SET button, RAID mode is completed.
- Note: After the success of the set RAID, will generate a new hard drive, you must first initialize, format the partition before it can be used normally. ( Format the hard disk operation , Please refer to page XX )

3.2.2 RAID mode reorganization operation

When there is a hard disk in the product is broken, the hard disk indicator light will flash with red light , but also beep ticking the call, press the back of the "SET" button, the buzzer will stop ticking Di Di , This time by the hard drive indicator instructions, the

replacement of the damaged hard drive products can be automatically reorganized function; ( Model WS200RC3 no sound tips )

3.3 RAID Reassembly Considerations

- 1.Replace the hard disk has a capacity limit ; ( The capacity of the new hard disk should be greater than or equal to the capacity of the damaged hard disk )
2. According to the hard disk indicator light red light to determine the damage to the hard disk
3. HW RAID Manager will also show the progress of the RAID re-assembly, the rest of the process, the user do not carry out any other operation, please be patient;
4. Blinking red - RAID reassembly is in progress.Blue light - reorganization is complete ;
5. The RAID mode can not be changed during reassembly of the RAID, otherwise the reassembly operation can not be completed ;

Warm Prompt

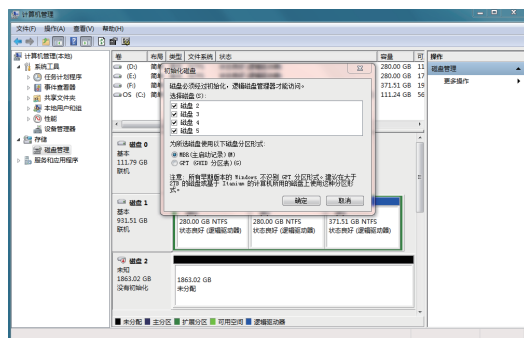
- (1) Please follow the Direction of User's Manual and DO NOT Force Remove Devices while Application. Force Remove may cause Error or Damage to the DATA and Devices.
- (2)ORICO Technologies Co.,Ltd will not be Liable for Compensation or Maintenance to the following Damage or Issues about DATA and Devices.  
A. Improper Operation not in Accordance with the Direction of User's Manual.  
B. Unauthorized Demolition.
- (3) The Item, Package and Accessories may Changed because of Production and not Exactly Match with what the Manual or Package shows. Please take the Practicality as standard. We sincerely Apologize for that and Deeply Appreciate your Understanding.

## IV Initialize and Format New Drives under Microsoft Windows

New drive need to be initialized and formatted or it won't work. Please follow the following direction to initialize and format your drive if you are mounting a new drive.

(1) Please ensure you have mounted drive to ORICO dock properly and attach the orico dock to computer.

(2) Right click on computer, Select "Manage", Open "Disk Management" in "Storage" of opened windows. a popup will come up here suggest a new drive need to be initialized. please select the disks and click ok will get it initialized.



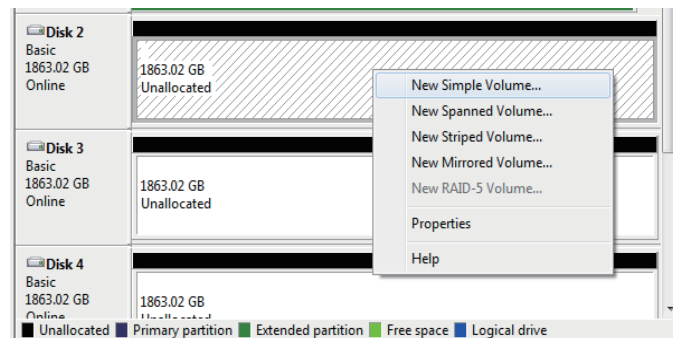
### Note:

A. If you are mounting a drive which not larger than 2TB and may using on a windows vista or earlier computer, initialize with partition style MBR is recommended.

B. If you are mount a drive larger than 2TB, initialize with partition style GPT is recommended. or you will get 2TB of the drive applicable and the rest will be unable to initialize.

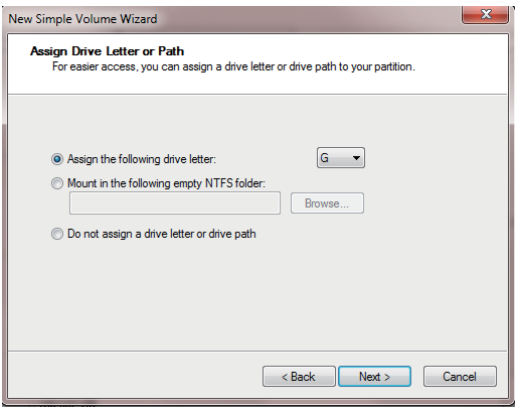
C. If you closed this windows by mistake or the windows have never come up, right click on the "Disk Number" and select "Initialize Disk" will get the windows come up.

(3) Right click on unallocated new drive, select "New Simple Volume" will start to add new volume and format it.

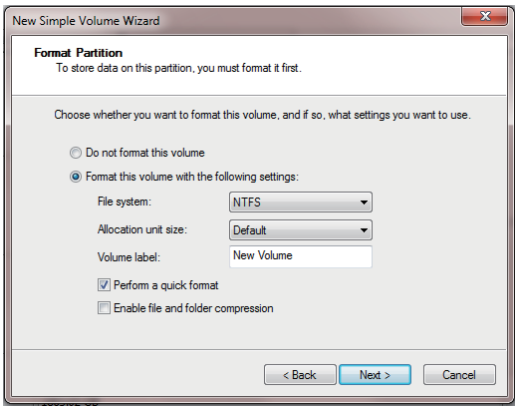


(4) set the volume size of your new volume. You can customize the size your expected. Or you can set the size of the volume at maximum disk space to set the drive to one volume.

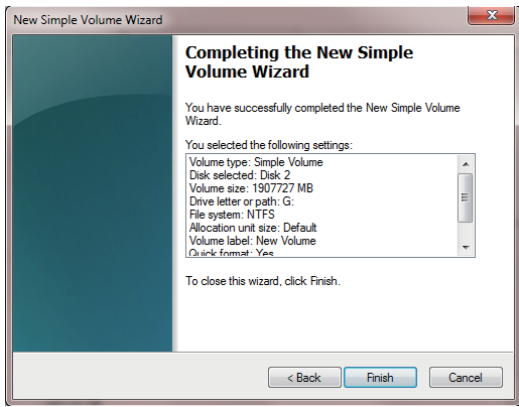
(5) Assign new drive letter for the new volume. drive letter such as C, D, E, F, G will shown in computer and explorer for application.



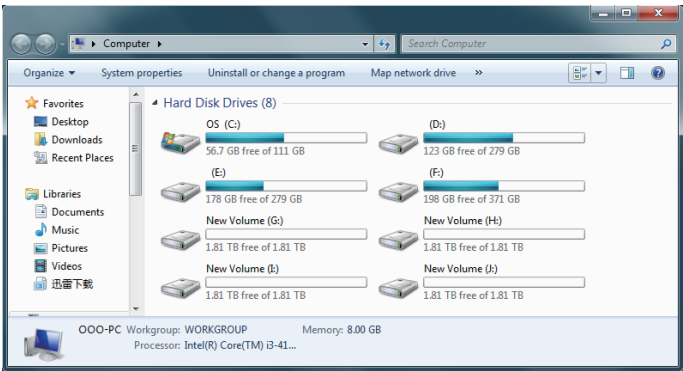
(6) Format your new volume. You can set the file system (NTFS or FAT32), allocation unitS size and volume label here. Perform a quick format is recommended. Please click "Next" when everything is configured.



(7) Click "Finish" will Start to Format the Volume.



(8) The formatting will take 5 to 30 seconds. When the formatting is done, the new volume will be ready for any application.



### 5.1 Trouble Shotting:

- (1) Please check if usb hosts of computer are working properly. Attach ORICO device and drive to rear usb hosts is recommended if you are using a desktop computer.
- (2) Mount one drive for test is recommended. please check if the ORICO device will works well when one drive mounted to HDD slot 1.
- (3) Please ensure the cable and power adapter attached properly.
- (4) Please ensure the drive have been formatted properly. Right click on computer, select **"Manage"**, Open **"Disk Management"** in **"Storage"** of opened windows will shows any drive mounted to your computer and if they are formatted or not. please follow the direction of **"Initialize and Format New Drives under Microsoft Windows"** if your are mounting new drives.
- (5) Please test the ORICO device and drive via other USB3.0 or 2.0 hosts or another computer if available.
- (6) Please test the ORICO device and drive with other USB3.0 cable or USB2.0 cable for printer if available.

If the issue remains, please contact ORICO customer care center and let us know the detailed info of your drive and computer with a screen shot of **"Disk Management"** & **"Disk Drives"** under **"Device Manager"**. ORICO customer care center will be here to help.

ORICO Customer Care Center

Website: <http://www.orico.cc>

ORICO customer care team: [supports@orico.com.cn](mailto:supports@orico.com.cn)

Tel: 86-755-25196059

### 5.2 Warranty

#### Warranty Term

ORICO Technologies Co., Ltd provide 12-Month warranty and lifetime technical support. Please contact ORICO customer care team when any issue and we will be more than happy to help you out.

#### Warranty Void

Warranty void upon following conditions.

1. Exceeded warranty period
2. Unauthorized disassembly or maintenance.
3. Improper operation not in accordance with manual.
4. Barcode or other identity of product missing or altered.
5. Natural disaster such as fire, earthquake etc.
6. Failure caused by accessories which is not manufactured by ORICO.
7. No proof of purchase.

### 5.3 Declaration

**ORICO Technologies Co., Ltd, all rights reserved.**

Thank you so much for purchase ORICO product. Please Refer to this manual when using orico product or experienced issues. Additionally, please kindly contact ORICO customer care team if any concern.

ORICO® is registered trademark of ORICO Technologies Co., Ltd

Any other product, trademark, service or company mentioned herein is trademark or registered trademark of the respective owners.

This manual is for reference only and it's not a guarantee. ORICO Technologies Co., Ltd reserve all rights of maintenance to this manual and shall not liable for any lost or damage resulting from this manual. Please kindly contact orico customer care team when any concern. ORICO Technologies Co., Ltd shall not liable for compensation and maintenance of the following conditions.

1. Any special, incidental, indirect and secondary lost or damage.
2. Profit and revenue lost or damage.
3. Files, data, drive and device lost or damage.

Note: Compensation for lost or damage resulting from this manual or orico product shall not exceed the payment of your purchase to this product.

## 5.4 About us

## Rebuild the new life of intelligent equipment

Founded in 2009, ORICO Technologies Co.,Ltd. is a leading global digital accessories brand engaged in R&D, production, sales and technical services. Persisting in original design concept "easy your PC", ORICO creates innovative accessories to rebuild the new life of intelligent equipment, the new experience of using them, to awaken the potential needs of consumers.

## FCC

This device complies with part 15 of the FCC Rules. Operation is subject to the following two conditions:

(1) This device may not cause harmful interference, and (2) this device must accept any interference received, including interference that may cause undesired operation.

# 备忘录 / Memorandum

[illegible]